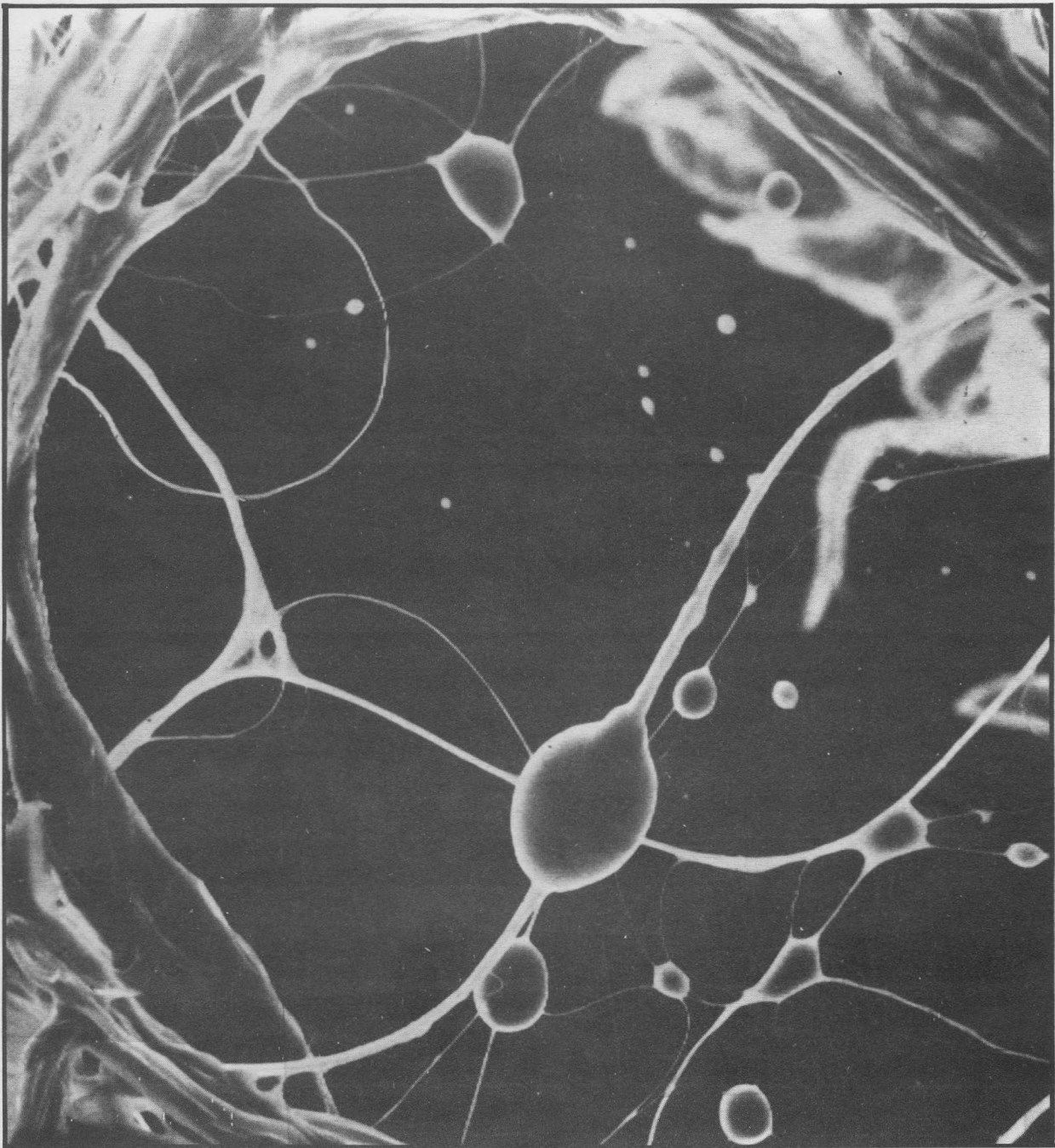


**bush
telegraph
march
1968**



BUSH

TELEGRAPH

WOOD LANE'S CLUB MAGAZINE

Editor

Editorial Board

Geoff Holder

Brian Tilbury
Ernie Cave
Mike Hagger
Penny Hamlyn

Cover —

ABSTRACT by Dennis Groombridge.
(Actually asbestos fibres coated
with an aerosol spray).

vol. 14 no. 2

EDITORIAL

One of the trials of Editorship is having to write an Editorial each month, or rather, deciding on a subject about which to write. In the news, this month particularly, is the impending change to the metric system and it was in your Editor's mind to make a point or two. Happily, I was forestalled by the abler pen of Mike Hagger, who submitted the commentary on the next page. I say no more.

P.S. Anybody seen 'LIFE' magazine lately?

SNOOKER

The two semi-finals of the tournament have at last been played off. In the first, Keith Elder beat 'Rocky' Menezes on the black ball in the last frame, while in the second, Mike Kendle beat Mike Squelch by 2 frames to nil, MJS never seeming to be able to get going. The final promises to be quite a game.

Calling All Photographers

Another photographic exhibition will be held in the Canteen on April 1st, 1968. Entries to C. Stern as soon as possible please.

Taraforever

(Or "Ode upon the sad demise of the British Imperial System of Weights and Measures") with apologies to Hilaire Belloc.

Do you remember the inch,
Miranda?
Do you remember the inch?
And the bushels and the scruples
And even tablespoonfuls,
And the feet so complete in all measurements discrete,
And the number of pounds in a quarter?
And the gill that would fill all the pots on the sill
(Looking out over that vine verandah)?
Do you remember the inch, Miranda,
Do you remember the inch?
And the gill that would fill all the pots on the sill,
Which was half a cubit wide
And a rod from side to side,
And the pennyweights to grains that made you flinch?
And scales that have shown how you've grown
By the stone
Or the ounce, noble weight, out of date,
Like the yard it's rejected,
Neglected,
Disrespected,
Disowned, not re-elected,
Sinking into history with the pole,
Lost its rôle -
And the furlong by a chain that made an acre!
Do you remember the inch,
Miranda?
Do you remember the inch?

Never more;
Miranda,
Never more,
Out with the Imperial score,
For Metric makes bold entry at the door.
No miles
O'er the plain will again by the chain
Be driven,
Or the gallons be given on the dials.
No miles:
Only the metre;
Farewell Imperial romance, hail litre!

M.H.

BADMINTON

Three matches have been played since the last issue of the B.T. The first was a friendly against Wimbledon Y.M.C.A. This match was a little different with only four players representing each club instead of the usual six. The second match was the return fixture at Bec Metre. The 2nd team reinforced by Keith Elder and Mike Squelch at the last moment, had a hard match but a very enjoyable evening. The third match was a league match and B.I.C.C. unable to field their strongest team were very relieved when they discovered that C.A.V. were missing three of their better players through illness. Our team just managed to win after a close fight.

B.I.C.C. 1st	v	Wimbledon Y.M.C.A.	Won	5-1
B.I.C.C. 2nd	v	Bec Metre	Won	7-2
B.I.C.C. 1st	v	C.A.V. (League)	Won	5-4

HANDICAP KNOCKOUT TOURNAMENT

EARLY ROUNDS

No complaints could be made about the handicapping, the efforts of the Tournament Committee produced close games. In the first and second rounds club members were entertained by several fine games. Of these the match between Keith Elder, Graham Taylor and the Kulkarni's provided a battle of skill and wits. After losing the first game Graham and Keith played extremely well, especially Graham who probably played his best badminton. In the third game Suhas played every shot in the book, but Graham and Keith were playing too well and at 10 all he could not hold them. Another notable game was between Peter Raw, Roy Serafini and Diana Watts, Sham Rajput. Sham played a devastating first game winning game one, but Peter and Roy were determined to do well. Everywhere Sham placed the shuttle, there was Peter or Roy, Sham ran out of wind and Diana came under a heavy bombardment from the other side of the net.

FINALS NIGHT

When the dust had settled on the preliminary skirmishings four pairs presented themselves in best bib and tucker for the semi-final and final rounds on Wednesday 21st February.

In the first semi-final Graham Taylor, partnering Keith Elder, seemed determined to be off the premises by 6.30 p.m. and the first game was surrendered to the power play of Vic Banks and John Reeves. But the lightweight Anglo-Scottish duo then showed that guile was as important as beef and, as Vic suffered the same loss of strength as Samson and John broke the strings of every available racket, they progressed easily to the final.

In the second match Peter Raw and Roy Serafini, the super-fit metallurgical pairing, found that their undoubted skills at rugger and motor-racing were difficult to adapt to the badminton court and were comfortably beaten by the experience of Mike Squelch and P.B. 'Mac' McAllister.

The final began so quickly that Keith and Graham had very inconsiderately lost the first game before your reporter returned from the bar. They recovered admirably to take a close second game and led 12-10 in the third. At this point, with Mac beginning to show the very slightest trace of perspiration on his brow, the betting amongst the onlookers was that the American Tournament winners would be beaten. But Mike had other ideas, and he and Mac won five consecutive points with a series of well-placed smashes to take the title.

Our photograph shows the winners and runners-up with their trophies.



RESULTS:-

1st Round

V.A.A.Banks, J.D.Reeves (-3) bt B.Pledger, Mrs.B.Pledger (+5) 15-10, 15-12;
 S.Kulkarni, Mrs.M.Kulkarni (-9) bt D.Cooper, D.Groombridge (-4) 15-9, 15-5;
 P.B.McAllister, M.J. Squelch (-9) bt D.Goff, G.Mogridge (-2) 15-10, 12-15, 15-8;
 P.Raw, R.Serafini (Scr) bt R.Coomber, A.C.G.Secrett (+9) W/O:

2nd Round

V.A.A.Banks, J.D.Reeves (-3) bt J.E.Taylor, B.J.Thompson (+3) 15-9, 15-4;
 K.R.M.Elder, G.C.Taylor (-7) bt S.Kulkarni, Mrs.M.Kulkarni (-9) 9-15, 15-8, 15-10;
 P.B.McAllister, M.J. Squelch (-9) bt J.M.R.Hagger, A.C.Hopkins (-2) 15-5, 15-14;
 P.Raw, R.Serafini (Scr) bt S.Rajput, Miss.D.Watts (+3) 1-15, 15-10, 15-11:

Semi-finals

K.R.M.Elder, G.C.Taylor bt V.A.A.Banks, J.D. Reeves 11-15, 15-5, 15-5;
 P.B.McAllister, M.J.Squelch bt P.Raw, R.Serafini 15-9, 15-9:

Final

P.B.McAllister, M.J.Squelch bt K.R.M.Elder, G.C.Taylor 15-4, 14-15, 15-12.

Parisian Weekend

The following notice has been received from Mr. J. Cuttler.

Club Office,
Bloomsbury Street.

15th February, 1968

The success of last year's Trip to Paris, and the promise of support for another Trip has prompted the Executive Council of the Club to promote an excursion to Paris for the week-end

FRIDAY 19TH APRIL - SUNDAY 21ST APRIL 1968
=====

In spite of the tendency for costs to be higher due to devaluation, I have managed to organise a Trip very similar to last year at a slightly REDUCED cost.

CHARGES FOR THIS YEAR'S TRIP WILL BE:-

LONDON OFFICE CLUB MEMBERS £15.0.0
NON-LONDON OFFICE CLUB MEMBERS £16.0.0

This reduction in cost has been achieved mainly by securing a BLOCK-booking with the Aircraft and cutting out some 'Agents' Fees.

Brief Itinerary

Friday 19th April 1968

4 p.m.

Leave Central London by Coach for Lympne Airport. Fly to Beauvais. Coach to Paris.

Saturday 20th April 1968

Coach Tour of Paris in the morning. Go-as-you-please in afternoon and evening.

Sunday 21st April 1968

Go-as-you-please UNTIL 3.30 p.m.

Then leave Paris by Coach for Beauvais for return flight to Lympne. Arrive Victoria 9 p.m.

The Cost of the Trip will include, Return Air Fare and Coach Fare between London & Paris, 2 nights Bed & Breakfast at the Moderne Palace Hotel (where we stayed last year), Dinner on Friday evening and a half-day Coach Tour of Paris.

Wood Lane Club Members & Friends are Welcome.

Members should submit reservations forms NOW. These forms are available from:- Mr. D. Lott, Records Office, Wood Lane.

the FILM column

ANNUAL GENERAL MEETING OF THE FILM SOCIETY

The Film Society A.G.M. will be held on Tuesday 9th April at 13.00 in the Polymer Physics Laboratory. It is hoped that all enthusiasts will attend with a view to electing the committee for the next season and also to put forward constructive suggestions.

NEW CINEMA CLUB

The NCC's current season offers a selection of Festival films (SOMETHING DIFFERENT, THE SWITCHBOARD OPERATOR, WALKOVER), a second all night American Underground session and several programmes of animated films. Full details from 122, Wardour Street, W.1.

A SECOND NIGHT UNDERGROUND

The NCC's second all night programme of American underground (avant-garde) films at the NFT offers 3 full length features and 12 supporting shorts. Of the features RELATIVITY will no doubt be included in the future programmes of some film societies. Described as a poetic impression of man's relation to the entire universe RELATIVITY is a masterful photographic essay using violent, erotic and repulsive images. Of the shorts NINE VARIATIONS ON A DANCE THEME, MROFNOC, HOWARD and PIANISSIMO will no doubt be given wider coverage in the future.

A GERMAN FILM FESTIVAL

At the end of January there took place an event of great interest to filmgoers (or cineastes as they are known in intellectual circles) - a Festival of Avant-Garde German Films. A week of films, open to the public, and free, was organised by the German Institute and held at the Film and Art Theatre in Hanover Street. Your committee was represented at each programme. The films shown were WILDER REITER GmbH by Franz Josef Spieker, Ulrich Schamoni's ES and ALLE JAHRE WIEDER, Jean Marie Straub's NICHT VERSOHN'T, Edgar Reitz's MAHLZEITEN and American George Moore's KUCKUCKSJAHREN, supported by a selection of short films. Altogether a very interesting and worthwhile week which should help to put the new German cinema figuratively on the map.

RECOMMENDATION

Luis Bunuel's BELLE DE JOUR starring Catherine Deneuve and Jean Sorel at the Curzon. Bunuel's latest and one of his great masterpieces, to be compared with the EXTERMINATING ANGEL which we shall be showing as our last programme this season.

NATIONAL FILM THEATRE

The current programme at the NFT (opposite) features the second Buster Keaton series and a season of Don Siegel's films from the post-war American Cinema. Also running is a series of films depicting the work of the great film cameramen. Full details of these films can be found in the NFT programme booklet in the Library.

NATIONAL FILM THEATRE PROGRAMME SUMMARY

MARCH					
1	Fri.	6.15	8.30	College	PA p. 29
2	Sat.	4.00	6.15 8.30	The General	PA p. 28
3	Sun.	4.00	6.15 8.30	The General	PA p. 28
4	Mon.	6.15	8.30	College	PA p. 29
5	Tues.	6.15	8.30	"The Last Years"	p. 27
6	Wed.	6.15		The Verdict	p. 25
6	Wed.		8.30	China Venture	p. 24
7	Thurs.		7.15	China Gate & China Venture (All seats bookable at 8/-)	p. 24
8	Fri.	6.15		Riot in Cell Block 11	p. 21
8	Fri.		8.30	The Big Steal	p. 25
9	Sat.	4.00		House of Bamboo	p. 24
9	Sat.	6.15		The Crimson Kimono	p. 24
9	Sat.		8.30	Riot in Cell Block 11	p. 21
10	Sun.	4.00		The Crimson Kimono	p. 24
10	Sun.	6.15		Invasion of the Body Snatchers	p. 21
10	Sun.		8.30	House of Bamboo	p. 24
11	Mon.	6.15	8.30	NEW FILMS FROM THE PRODUCTION BOARD (All seats bookable)	p. 31
12	Tues.	6.15		Underworld U.S.A.	p. 24
12	Tues.		8.30	Invasion of the Body Snatchers	p. 21
13	Wed.	6.15		Baby Face Nelson	p. 22
13	Wed.		8.30	Underworld U.S.A.	p. 24
14	Thurs.	6.15		The Rise and Fall of Legs Diamond	p. 26
14	Thurs.		8.30	Baby Face Nelson	p. 22
15	Fri.	6.15		The Line Up	p. 22
15	Fri.		8.30	The Scarface Mob	p. 26
16	Sat.			THEATRE CLOSED	
17	Sun.			THEATRE CLOSED	
18	Mon.	6.15		Hell is for Heroes	p. 22
18	Mon.		8.30	The Line Up	p. 22
19	Tues.	6.15		Run of the Arrow	p. 26
19	Tues.		8.30	Hell is for Heroes	p. 22
20	Wed.	6.15		Run of the Arrow	p. 26
20	Wed.		8.30	Flaming Star	p. 21
21	Thurs.		7.15	The Killers (Siodmak) & The Killers (Siegel) (All seats bookable at 8/-)	p. 21
22	Fri.	6.15	8.30	The Hanged Man	p. 22
23	Sat.	4.00		"Beginnings & Surprises" I	
23	Sat.	6.15	8.30	Smouldering Fires	PA p. 6
24	Sun.	4.00		"Beginnings & Surprises" II	PA p. 5
24	Sun.	6.15	8.30	Woman of the World	PA p. 6
25	Mon.	6.15	8.30	INTERNATIONAL RAILWAY FILM PROGRAMME (All seats bookable)	p. 30
26	Tues.	6.15	8.45	The Student of Prague	PA p. 7
27	Wed.	6.15	8.30	The Parson's Widow	PA p. 7
28	Thurs.	6.15	8.30	Tabu	EC p. 8
29	Fri.	6.15	8.30	Angel	p. 8
30	Sat.	4.00	6.15 8.30	Touch of Evil	p. 9
31	Sun.	4.00	6.15 8.30	Letter from an Unknown Woman	p. 9
APRIL					
1	Mon.	6.15	8.40	Lilith	p. 10
2	Tues.	6.15	8.30	Yojimbo	EST p. 10
3	Wed.	6.15	8.30	Great Expectations	p. 11
4	Thurs.	6.15	8.30	Call Northside 777	p. 11
5	Fri.	6.15	8.30	Eve	p. 12
6	Sat.	4.00	6.15 8.30	Le Feu Follet	EST p. 12
7	Sun.	4.00		Blood and Black Lace	D p. 13
7	Sun.		7.00	Knights of the Teutonic Order	EST p. 13
8	Mon.	6.15	8.30	NEW FILMS FROM THE PRODUCTION BOARD (All seats bookable)	p. 31
9	Tues.	6.15	8.30	Bonjour Tristesse	p. 14
10	Wed.	6.15	8.30	Wild River	p. 15
11	Thurs.	6.15	8.30	An Orchid for the Tiger	D p. 14
12	Fri.	6.15	8.30	An Actor's Revenge	EST p. 18
13	Sat.	4.00	6.15 8.30	The Enchanted Desna	EST p. 16

*Details published in December/February programme. D denotes English dubbed. EC denotes earphone commentary. EST denotes English sub-titles. PA denotes piano accompaniment by Mr. Arthur Dulay and Miss Florence-Djong.

Table Tennis

In the 6th Division of the North Acton League, B.I.C.C. continue their winning ways in both the League and the Junior Cup.

RESULTS

Thurs. Feb. 1st vs Lyons II away

(Junior Cup, 3rd Round)

Won 7-2

Thurs. Feb. 15th vs Sanderson III away

Won 8-2

The home match against International Nickel scheduled for Thurs. 8th, was postponed due to sickness among our opponents. When finally played off on Monday 26th, the result was a 10-0 win for BICC.

The Page 8.5 Column

A monthly miscellany.



MARRIAGE AIN'T SO BAD, LADS

Whilst the average bachelor may well be treating 1968 with a certain degree of circumspection there are those who will surely point out the income tax concessions that marriage and subsequent off-spring can afford. The origins of the present allowances can be traced back to Pitt (the Younger)'s Income Tax Bill in 1798, but the British bachelor suffered discrimination before that date. In 1695 an Act was passed entitled "An Act for granting to His Majesty certain rates and duties upon marriages, births, and burials, and upon bachelors and widowers, for the term of five years, for carrying on the war against France with vigour". Bachelors above 25 years of age paid 1/- per year, or more, according to their rank. A bachelor duke paid £12 and other ranks in proportion. This tax was allowed to expire in 1706. In 1785, when Pitt proposed a tax on female servants, he exempted persons who kept only one servant and had two children. To make up the deficiency an extra tax was levied upon bachelors' households - Romanist priests excepted!

QUOTE OF THE MONTH

From a millionaire fruit-machine owner when asked whether he resented paying about 80% of his income to the Exchequer.

"No, we've got all the money we need. We just keep going for the glory of the thing".

RIDDLE

What is the connection between the visit of Pressed Steel Fisher Ltd. and the disappearance of a grey Austina saloona car from the site?

FROM THE POSTBAG

A recent circular from a not very well-known shirt manufacturer bore the following address.

**The Secretary,
B.I.C.C. Badminton Association of England,
~~Messrs British Insulated Cables,~~
38 Wood Lane, W.12.**

(Malaysia here we come!)

THINGS SEEN

On the window of a Camden Town Café, the following whitewashed invitation.

3 CORSE LUNCH 3/-

- 8.5 -

(Bodies are cheap this year!).

Fairy Story

Have you ever wondered Reader dear,
Approaching us in trembling fear,
With lists that stretch from there to here
Of Lit. Refs. on the most obscure
You humbly beg us to procure
Of AD that and TR this
Of Rev. Mod. Phys.
and Zhur. Tekh. Fiz.
And Acta Met. and Acta Cryst.
and J. Sci. Inst.,
and I.E.E.s

And things like these
Not to mention the

電気学会雑誌

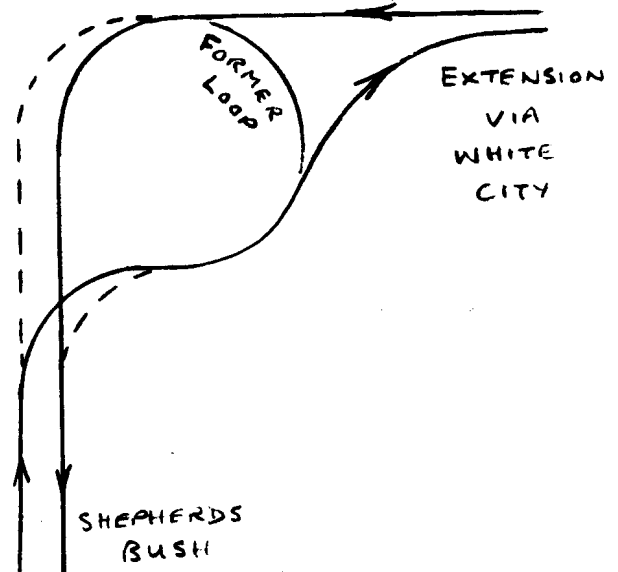
(That's Denki Gakkai Zasshi)
How M. and P.
So easily
Within a day
Or sometimes three
Will find you this variety?

Reader we will confess to thee
We'll tell you all quite modestly.
It is not us, it is not we,
It is not really us at all.
It is a little gnome called NaLL
Who lives away in the wilds of Yorks
And works and works and works.
He has no time for merry pranks.
His home is full of serried ranks
Of books, of journals and reports,
And other mags. of various sorts.
He scampers up and down the shelves,
And, helped by lots of other elves,
He seeks your refs. and takes them down,
And wraps them up in paper brown,
And sends them off to London Town,
And then at 38 Wood Lane,
Often through quite heavy rain,
The messengers with energy
Take them up to M. and P.
Who send them out to thee and thee.

So when you've finished bring them back.
To keep NaLL waiting's very slack.
You'd like to help him, would'nt you?
So bring them back BEFORE they're due.

How InQUIZitive Are You? Answers

1. Trains in this country normally use the left-hand track, seen in the direction of forward travel. At White City Station they use the right-hand track. This is because the tracks between Shepherd's Bush and White City were originally part of a reversing loop, when the line terminated at the old station down at the end of the private road. By crossing over as in the diagram (this side of Shepherd's Bush), the loop could be constructed in a smaller space than if the loop was as shown by the dotted lines. When the extension out to Acton via the 'new' White City Station was built, a flyover was constructed beyond White City so that trains could resume their normal left-hand path.



2. In the pavement surrounding the pond on this site. Base dia. 22ft. Height 210 ft. It carried away effluent gases from the old coal-fired power station of the Kensington and Notting Hill Electric Lighting Company (built in 1900). After Callender's took over the site in 1931, it was used as a vertical laboratory, for experiments on the draining properties of oil-filled cables.
3. In Wood Lane, on the east pavement. Manhole covers, marked "London County Council Tramways".
4. Odeon, Shepherd's Bush.
5. Du Cane Road, after Sir Edmund Du Cane.
6. On the piers of a bridge over which the Metropolitan Line passes. The notices can be seen from a footpath joining Goldhawk Road Station with Sulgrave Road. "Hammersmith and City Railway".
7. On the wall of White City Station. Awarded the order of merit for being the best station.
8. On the south wall of the Essoldo Theatre, Shepherd's Bush.
9. Spans the distance between the eastern end of Shepherd's Bush Green and the Central Line car sheds. Now used by Sago-CDO. Was originally the entrance to the 1908 Franco-British Exhibition, and until recent years also extended alongside the private road and crossed Wood Lane to the Exhibition site proper, where the BBC TV centre now is.

10. Rockley Road and Richmond Way. Old railway bridges are still in place, although the line itself (L.S.W.R. to Richmond) has long since been lifted and the land built over. "The Grampians" occupies part of this land.
11. A sword. 'She' was erected as a war-memorial after the 1914-18 war. (Eastern end of the Green).
12. The grating provides access to what were the 'ash-runs' of the old power station, which still exist beneath the Stores and the R. & P. General Processing laboratory and also connect with the Metallurgy Department basement. Originally they also connected with the base of the chimney (see (2) above). There is another access point outside the Tracing office.
13. On the corner of Rockley Road and Minford Gardens.
14. The "Beaumont Arms" at the corner of Wood Lane has a sign on top of a pole on the opposite (Shepherd's Bush Green) side of the road - within the railings surrounding the convenience!

Hockey

The worst of the weather having eased off a bit the hockey section once more became active and apart from one or two week-ends have managed to keep our fixture list alive.

After our Glaxo defeat we returned to the same area to play against Birkbeck II. The game was good and clean but we never managed to score and yet another defeat was notched up. The week after we visited B.E.A.'s ground and as usual the weather turned into a quite pleasant snowstorm which just lasted the duration of the game and we were all quite relieved to get into the hot bath. The game was very even and the result, a draw, very fair and put Vic Wellington, our leading goal scorer, way ahead of his nearest rival, Robin Wood.

For our first home match in many weeks, we played against Kodak and both teams were hampered by a rough Scrubs surface. The result was the only fair one possible, although there was many an anxious moment when the game could, and perhaps should, but for some excellent goal-keeping, have been lost by either side.

RESULTS

Birkbeck II	Away	Lost	0-2
B.E.A.	Away	Drew	2-2
Kodak	Home	Drew	0-0